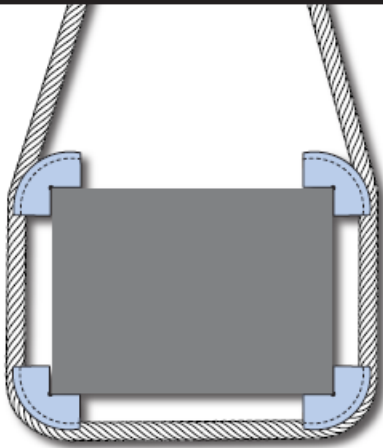


MAGNETIC CORNER PROTECTION

Sling Protector



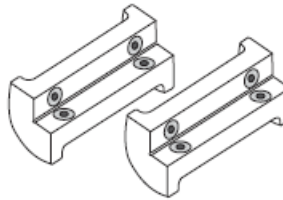
Application Information

12,500 PSI MAX

Do not use above 220° or Below -20°

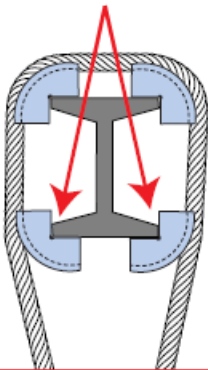
Details:

- Made of solid nylon
 - Attaches with magnets
 - Works with:
 - Steel slings
 - Flat web slings
 - Roundslings
 - Available in 3 sizes:
 - 9" long (#9-3-90)
 - 12" long (#12-3-90)
 - 18" long (#18-3-90)
- Contact surface dia: 5"



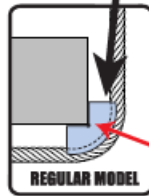
Made of solid nylon, these Magnetic Sling Protectors are only 1/7th the weight of steel, no tools are needed since magnets allow for quick and easy attachment and removal.

6,250 lbs per inch
of web sling width



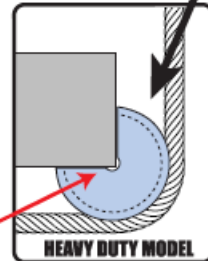
Not Full contact – only
1/2 on one side

12,500 lbs per inch of
web sling width



REGULAR MODEL

12,500 lbs per inch of
web sling width



HEAVY DUTY MODEL

With FULL contact on inside surfaces

Attention:

Note that 12,500 psi is the maximum compression strength of the material that these sling protectors are made from. Therefore, to have a safety margin, we recommend a safe working load limit (SWLL) of 12,500 lbs per inch of full contact sling width (as with a synthetic sling) on the outside of the sling protector. Additionally, you must also have full surface contact on the 90 degree surfaces on the inside of the sling protector to achieve this capacity or SWLL.

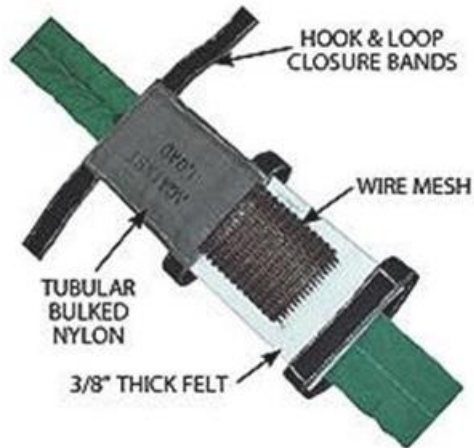


Magnetic Corner Protectors

Synthetic products can be damaged and cut when lifting on load edges. Edges in contact with the sling must be "padded" with materials of sufficient strength and thickness to prevent damage and catastrophic sling failure.

Magnetic Sling Protectors are a solution to many of your rigging and material handling nightmares. Lightweight and easy to use, these wear protection devices enhance the service cycle of the rigging and help to "soften" edges that could damage slings. These plastic protectors attach with magnets to steel corners and keep the sling from contacting the load. For use with synthetic, wire rope and synthetic rope applications. Just snap in place and put the sling on top of the protector. This product is not for use at temperatures below negative 20 degrees Fahrenheit or above temperatures of 220 degrees Fahrenheit. The maximum loading is 12,500 PSI.

Made of nylon, the Magnetic Sling Protectors are only 1/7th the weight of steel, no tools are needed since magnets allow for quick and easy attachment and removal. Available in nine inch, 12-inch and 18-inch models.



| MESH GUARD® STOCK NUMBER | SLING WIDTH (Inches) | MESH GUARD® OVERALL WIDTH (Inches) | PROTECTION RATING (Lbs.) | WEIGHT (Lbs./Ft.) |
|--------------------------|----------------------|------------------------------------|--------------------------|-------------------|
| MG-3 | 2 | 5 | 20,000 | 2.00 |
| MG-4 | 3 | 6 | 20,000 | 2.50 |
| MG-6 | 4 - 5 | 8 | 40,000 | 4.00 |
| MG-8 | 6 | 10 | 40,000 | 5.25 |
| MG-10 | 8 | 12 | 60,000 | 6.50 |
| MG-12 | 10 | 14 | 60,000 | 8.00 |

Mesh Guard® features a unique combination of Sling Protection materials. A layer of felt buffers the sling while carbon steel wire mesh covers the load edge. Hook and loop closure bands make attachment and removal quick and easy

⚠ WARNING

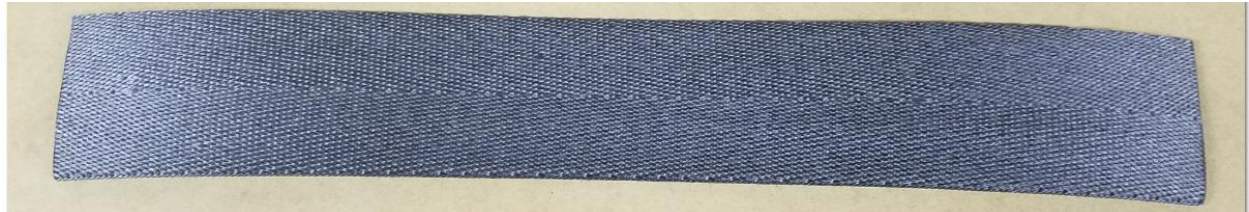
Mesh Guard® is for use on 90 degree cornered loads.

Sling must not be allowed to run off the edge of the wire mesh.

CORDURA SLING PROTECTION PAD (Made From Cordura Yarn)

AVAILABLE IN 1-2-3-4-6-IN WIDTHS

CORDURA CAN BE SEWN ON EITHER ONE OR BOTH SIDES OF SLING FULLY OR PARTIALLY COVERING THE SLING



ALSO AVAILABLE IN SLEEVE TYPE TO SLIDE ON THE SLING BODY



IT IS SUGGESTED THAT SLINGS IN CONTACT WITH EDGES, CORNERS, PROTRUSIONS, OR ABRASIVE SURFACES SHALL BE PROTECTED, WITH A MATERIAL OF SUFFICIENT STRENGTH THICKNESS, AND CONSTRUCTION TO PREVENT DAMAGE TO THE SLING

SLING PROTECTION IS AS STATED ONLY FOR (SLING PROTECTION) & HAS NO BEARING ON THE WORKING LOAD LIMIT STATED ON THE SLING TAG

TREATED NYLON WEB SLING PROTECTION PAD

AVAILABLE IN 1-2-3-4-6-8-10-12-IN WIDTHS

TREATED WEB CAN BE SEWN ON EITHER ONE OR BOTH SIDES OF SLING FULLY OR PARTIALLY COVERING THE SLING



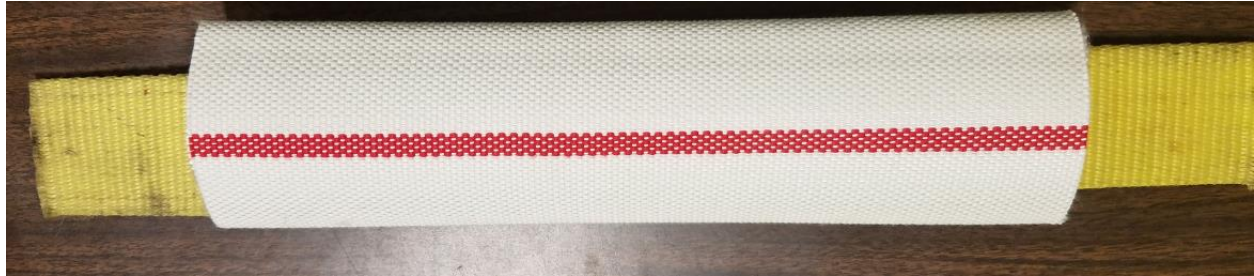
ALSO AVAILABLE IN SLEEVE TYPE TO SLIDE ON THE SLING BODY



IT IS SUGGESTED THAT SLINGS IN CONTACT WITH EDGES, CORNERS, PROTRUSIONS, OR ABRASIVE SURFACES SHALL BE PROTECTED, WITH A MATERIAL OF SUFFICIENT STRENGTH THICKNESS, AND CONSTRUCTION TO PREVENT DAMAGE TO THE SLING

SLING PROTECTION IS AS STATED ONLY FOR (SLING PROTECTION) & HAS NO BEARING ON THE WORKING LOAD LIMIT STATED ON THE SLING TAG

MILL HOSE SLING PROTECTION PAD



**1-1/2-IN MILL HOSE WORKS WITH
1-IN WIDE 1 & 2 PLY EYE & EYE SLINGS**

**2-IN MILL HOSE WORKS WITH
2-IN WIDE 1-2-3-4 PLY EYE & EYE SLINGS**

**3-IN MILL HOSE WORKS WITH
3-IN & 4-IN WIDE 1-2 PLY EYE & EYE SLINGS**

**4-IN MILL HOSE WORKS WITH
5-IN & 6-IN WIDE 1-PLY EYE & EYE SLINGS**

***IT IS SUGGESTED THAT SLINGS IN CONTACT WITH EDGES, CORNERS,
PROTRUSIONS, OR ABRASIVE SURFACES SHALL BE PROTECTED, WITH A
MATERIAL OF SUFFICIENT STRENGTH THICKNESS, AND CONSTRUCTION TO
PREVENT DAMAGE TO THE SLING***

***SLING PROTECTION IS AS STATED ONLY FOR (SLING PROTECTION) & HAS NO
BEARING ON THE WORKING LOAD LIMIT STATED ON THE SLING TAG***