

CROSBY HOOK LATCH KITS (NEW STYLE)

S-4320 LATCH KITS



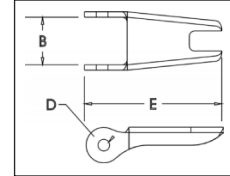
- Heavy duty stamped latch interlocks with the hook tip.
- High cycle, long life spring.
- Can be made into a "Positive Locking" Hook when proper cotter pin is utilized.
- Latch kits shipped unassembled and individually packaged with instructions.

IMPORTANT: The new S-4320 Latch Kit will not fit the old style 319, 320 and 322 hooks.

S-4320 Replacement Latch Kit for 319N (new), 320N, 322N and 339N Hooks

Hook Size (t)			Hook ID Code	S-4320 Stock No.	SS-4320 Stock No.*	Weight Each (lbs.)	Dimensions (in.)		
Carbon	Alloy	Bronze					B	D	E
3/4	1	.5	D	1096325	1097100	.03	.50	.15	1.44
1	1-1/2	.6	F	1096374	1097109	.04	.54	.17	1.56
1-1/2	2	1	G	1096421	1097118	.04	.63	.17	1.66
2	3	1.4	H	1096468	1097127	.06	.66	.17	1.91
3	5	2	I	1096515	1097136	.10	.83	.20	2.31
5	7	3.5	J	1096562	1097145	.15	1.04	.20	2.88
7-1/2	11	5	K	1096609	1097154	.28	1.25	.27	3.56
10	15	6.5	L	1096657	1097163	.33	1.35	.27	3.81
15	22	10	N	1096704	1097172	.84	1.66	.39	5.18

* SS-4320 is Stainless Steel construction with cad plated steel nuts.



main & accessories

CROSBY HOOK LATCH KITS (OLD STYLE)

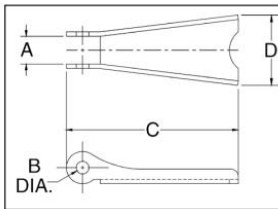
SS-4055



LATCH ORDERING INSTRUCTIONS

1. Specify latch kit stock number.
2. Specify capacity of hook to which latch will be assembled.
3. Specify hook material (carbon or alloy).

NOTE: These latches will not work on new "N" style Hooks.



SS-4055 Latch Kits

- Stainless steel construction with cadmium plated steel nuts.
- Shipped packaged and unassembled.
- Instructions included for easy field assembly.

Hook Size (t)			Hook ID Code	SS-4055 Stock No.	Weight Each (lbs.)	Dimensions (in.)			
Carbon	Alloy	Bronze				A	B	C	D
3/4	1	.5	D	1090027	.02	.38	.16	1.44	.59
1	1-1/2	.6	F	1090045	.02	.38	.16	1.60	.59
1-1/2 - 2	2 - 3	1.0 - 1.4	G / H	1090063	.03	.47	.19	1.84	.82
3	4-1/2	2.0	I	1090081	.06	.56	.17	2.41	1.00
5	7	3.5	J	1090107	.11	.58	.20	2.97	1.21
7-1/2 - 10	11 - 15	5.0 - 6.5	K / L	1090125	.17	.59	.27	3.66	1.50
15	22	10.0	N	1090143	.39	.83	.39	4.94	1.90
20	30	--	O	1090161	.63	.94	.52	5.88	2.56
25 - 30	37 - 45	--	P / S	1090189	1.12	2.19	.39	6.50	3.84
40	60	--	T	1090205	1.77	3.31	.52	7.88	4.12

**TO IDENTIFY LATCH KITS NEEDED FOR CROSBY HOOKS
MATCH TO ABOVE CHARTS FOR CORRECT LATCH KIT**



HOOK ID CODE

A = ALLOY
C = CARBON

OR LATCH KIT LETTER IS STAMPED ON LATCH AS SHOWN



Johnson J-Latches

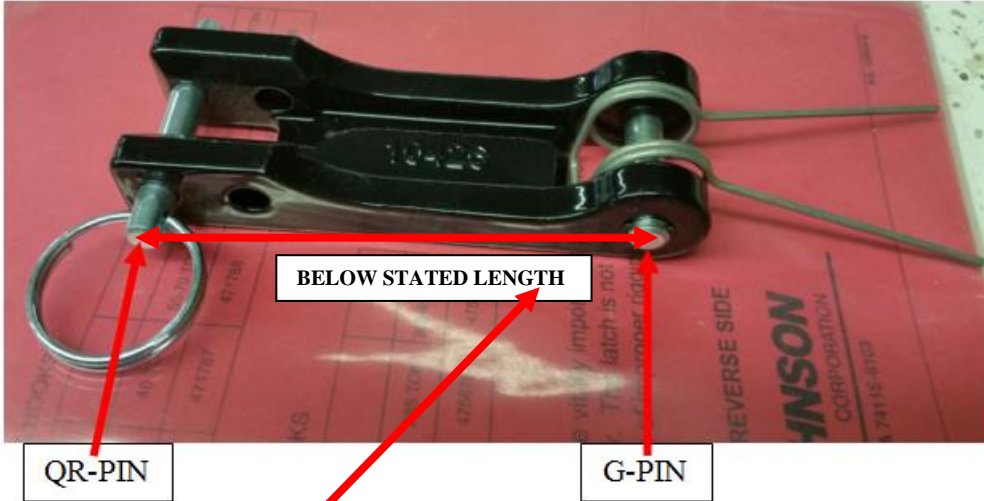
[return to latch kits page](#)



Johnson J-Latches are uniquely engineered hook latch system providing outstanding flexibility and durability. Its heavy-duty design incorporates a steel beam that positively engages a special recessed area in the hook tip. The removable two-position pin allows the Johnson J-Latches to function either as a locked bar or as an automatic spring latch.

Gunnebo Johnson J-Latches meet OSHA requirements and are standard equipment on Johnson crane blocks through 165 ton capacity, all Johnson overhaul balls, and swivels. The Gunnebo Johnson J-Latches are also offered as an option on Johnson snatch blocks.

Hook Size	5 Ton	7 Ton	15 Ton	22 Ton	30 Ton	40 Ton	55-70 Ton	60-100 Ton	130-165 Ton
Latch Kit Part Number	471782	471783	471784	471785	471786	471787	471788	471789	471790
Latch Kit Model Number	JL3-5	JL7	JL10-15	JL20-25	JL30	JL35-45	JL50-70	JL75-110	JL115-165
Block Number on Bottom	10364	10420	10426	10427	10365	10366	10367	10368	10369



CRANE BLOCK J-LATCH KITS & PARTS

J LATCH CASTING NUMBERS			
MODEL	STEEL	KIT	INSTALL
JL-3-5 LENGTH 1.938 WIDTH 1.00	10364	471782 LIST: 68.00	471831
JL-7 LENGTH 2.50 WIDTH 1.187	10420	471783 LIST: 89.00	471832
JL 10-15 LENGTH 3.10 WIDTH 1.187	10426	471784 LIST: 115.00	471833
JL-20-25 LENGTH 4.25 WIDTH 1.50	10427	471785 LIST: 155.00	471834
JL-30 LENGTH 5.50 WIDTH 1.67	10365	471786 LIST: 189.00	471835
JL-40 LENGTH 5.54 WIDTH 2.93	10366	471787 LIST: 298.00	471836
JL55-70 LENGTH 6.50 WIDTH 4.35	10367	471788 LIST 519.00	471837
JK-75-110 LENGTH 7.88 WIDTH 4.38	10368	471789 LIST 601.00	471838
JL-115-165 LENGTH 9.125 WIDTH 4.38	10369	471790 LIST: 690.00	471839
JL 200-300 LENGTH 16.85 WIDTH 8.50	11476	474206 LIST: 1,644.00	473697

08/2020
 INDIVIDUAL PARTS NO LONGER
 AVAILABLE
 NOW SOLD IN REPLACEMENT KITS
 PARTS INCLUDED SHOWN BELOW

